

# BARRIER PROTECTION SERUM

For sensitive skin weakened by daily aggressors

- Cutaneous sensitivity
- Compromised skin barrier
- Redness-prone skin
- Dry, sensitive skin

## CICALFATE +

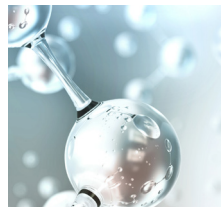
### INTENSIVE SKIN RESTORATIVE SERUM

Suitable for all skin types including even the most sensitive, this serum is powered by a unique combination of skin restoring and soothing ingredients to promote lasting, healthy skin and provide protection from daily aggressors. Clinically demonstrated to **help restore skin's barrier in one day**<sup>1</sup>.



1.0 fl.oz. | SRP: \$40

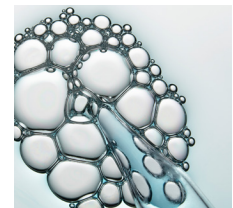
### SYNERGISTIC KEY INGREDIENTS



**TRP-REGULIN™**  
(4-T-Butylcyclohexanol)  
Helps reduce skin sensitivity and soothes sensations of discomfort



**PRO-VITAMIN B**  
(Panthenol)  
Helps strengthen the skin barrier while replenishing moisture levels in skin

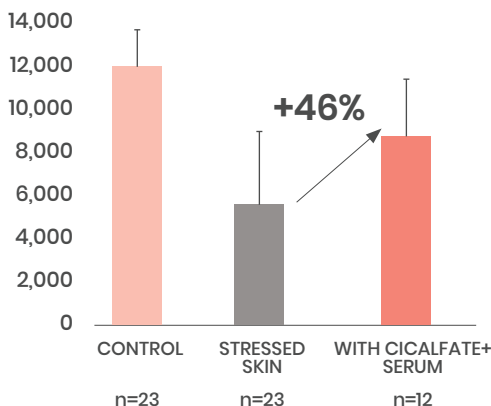


**AVÈNE THERMAL SPRING WATER (85%)**  
Clinically proven by 150+ studies to soothe, soften and calm sensations of discomfort

### CLINICALLY PROVEN RESULTS

#### SKIN BARRIER

Restores the weakened skin barrier in only 1 day by 46%<sup>1</sup> and skin's repair mechanism after 3 weeks<sup>2</sup>.

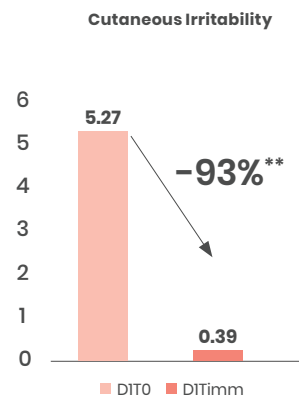


HELPS  
**RESTORE**  
SKIN BARRIER  
IN **1** DAY<sup>1</sup>

LASTINGLY  
STRENGTHENS  
SKIN  
BARRIER<sup>2</sup>

#### SKIN SENSITIVITY<sup>3</sup>

Provides immediate soothing upon application by alleviating general discomfort.



**IMMEDIATELY SOOTHES**

SKIN SENSITIVITY  
**-93%**

\*\*STATISTICALLY SIGNIFICANT

FRAGRANCE-FREE | PARABEN-FREE | SULFATE-FREE | ALCOHOL-FREE | SILICONE-FREE | OIL-FREE | NON-COMEDOGENIC

<sup>1</sup>Pharmacological test on RHE under hydric stress. <sup>2</sup>Clinical study, 35 subjects, sensitive skin assessment using a scale from 0 to 10 using the serum twice a day on face, neck and eye contour for 21 days. <sup>3</sup>Auto-evaluation immediately after application; 35 subjects; based on Sensitive scale, DI, D43.