

# CICALFATE+ SKIN BARRIER & PROTECTIVE WOUND CARE



EAU THERMALE  
**Avène**  
LABORATOIRE DERMATOLOGIQUE

## NON-OOZING WOUNDS & LESIONS, POST-PROCEDURE



0.5 fl.oz. | SRP: \$12  
1.3 fl.oz. | SRP: \$26  
3.3 fl.oz. | SRP: \$40

### CICALFATE+ RESTORATIVE PROTECTIVE CREAM

#### Indications:

##### Lesions & wounds:

- Superficial wounds • Cuts • Burns • Perioral area
- Diaper area • External mucosae

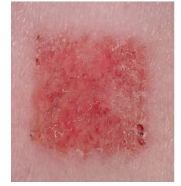
##### Post-procedure:

- Ablative & non-ablative lasers
- Photo facials (IPL/BBL)
- Chemical peels (Superficial/Medium/Deep)
- Surgical procedures

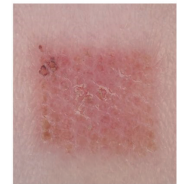
#### Benefits & Key Ingredients:

- Rich, semi-occlusive texture protects from external aggressors
- **C+Restore:** Postbiotic ingredient, rich in proteins to help restore skin
- **Copper-Zinc Sulfate Complex:** Promotes healthy skin environment for optimal recovery
- **Avène Thermal Spring Water:** Soothes, softens and calms skin

VISIBLE IMPROVEMENT  
IN 2 DAYS<sup>1</sup>



WITHOUT  
CICALFATE+ CREAM



WITH  
CICALFATE+ CREAM



## OOZING LESIONS & WOUNDS



3.3 fl.oz. | SRP: \$38

### CICALFATE+ ABSORBING SOOTHING SPRAY

#### Indications:

- Post surgery/procedure • Skin rashes
- Diaper area • Interdigital spaces • Skin folds

#### Benefits & Key Ingredients:

- 3-in-1 spray dries, purifies and helps restore sensitive skin prone to macerations
- Does not sting the skin
- **C+Restore:** Postbiotic ingredient, rich in proteins to help restore skin
- **Copper-Zinc Sulfate Complex:** Promotes healthy skin environment for optimal recovery
- **Zinc Oxide:** Key drying agent
- **Avène Thermal Spring Water:** Soothes, softens and calms skin

HELPS RESTORE  
SKIN BARRIER IN

**48H<sup>2</sup>**

PURIFIES SKIN  
IN JUST

**1HR<sup>3</sup>**



## HYPERTROPHIC SCARS



1.0 fl.oz. | SRP: \$34

### CICALFATE+ SCAR GEL

#### Indications:

- Hypertrophic scars • Keloids • C-section • Minor surgery
- Mastectomy • Thyroidectomy • Mohs surgery

#### Benefits & Key Ingredients:

- Helps improve the appearance of visible scars
- Subjects noticed improvement in pain, itching, pigmentation, thickness and pliability of the scar<sup>4</sup>
- Incorporate a proper massage technique for improved scar appearance
- **Dimethicone:** Hydrates, protects and helps smooth scar tissues
- **C+Restore:** Postbiotic ingredient, rich in proteins to help restore skin
- **Hyaluronic Acid:** Immediately plumps and maintains high level of hydration
- **Avène Thermal Spring Water:** Soothes, softens and calms skin



DAY 1



DAY 22<sup>4</sup>



TESTED ON SENSITIVE SKIN • FRAGRANCE-FREE • PARABEN-FREE • NON-COMEDOGENIC • FORMULATED TO MINIMIZE RISKS OF ALLERGIC REACTIONS

<sup>1</sup>Comparative study on 20 subjects following de-epidermization by Ebiium YAG Laser on front surface of forearms. Application of Cicalfate+ for 21 days. 1 semi-occlusive application daily from D1 to D6. 2 open applications daily from D7 to D21. p<0.0001 vs. untreated skin. <sup>2</sup>Open monocenter clinical study carried out under dermatological and pediatric control. 51 subjects (infants, children and adults), 2 applications a day for 21 days. <sup>3</sup>In-vitro study, evaluation of the purifying effect on representative skin germs. <sup>4</sup>Monocentric open clinical study under dermatological and ophthalmological control. Clinical rating based on the POSAS scale. 50 subjects, 2 daily applications of Cicalfate+ Scar Gel for 3 months.

# CICALFATE +

## SKIN BARRIER & PROTECTIVE WOUND CARE



EAU THERMALE  
**Avène**  
LABORATOIRE DERMATOLOGIQUE

### SUPERFICIAL PROCEDURES & TATTOOS



1.3 fl.oz. | SRP: \$38

#### CICALFATE+ HYDRATING SKIN RECOVERY EMULSION

##### Indications:

- Lasers (Superficial) • Photo facials (IPL/BBL)
- Chemical peels (Superficial) • Tattoos • Microblading

##### Benefits & Key Ingredients:

- Lightweight, non-greasy texture penetrates quickly
- C+Restore:** Postbiotic ingredient, rich in proteins to help restore skin
- Copper-Zinc Sulfate Complex:** Promotes healthy skin environment for optimal recovery
- Hyaluronic Acid:** Plumps and provides 24 hours of hydration<sup>5</sup>
- Niacinamide:** Helps restore, calm and soothe the skin
- Avène Thermal Spring Water:** Soothes, softens and calms skin

HELPS RESTORE SKIN  
**48H<sup>5</sup>**

**-60%**  
REDUCTION IN BURNING & PAIN SENSATIONS<sup>5</sup>

### DRY, CHAPPED LIPS



0.3 fl.oz. | SRP: \$20

#### CICALFATE+ RESTORATIVE LIP BALM

##### Indications:

- Dry, chapped lips • Medication-induced dryness • Perioral skin conditions

##### Benefits & Key Ingredients:

- Helps nourish and maintain soft lips
- Protects against external aggressors
- Water-resistant formula quickly absorbs
- C+Restore:** Postbiotic ingredient, rich in proteins to help restore skin
- Trio of Oils:** Blend of Castor, Shea and Jojoba Plant Oils help nourish and protect
- Avène Thermal Spring Water:** Soothes, softens and calms skin

**24H<sup>6</sup>**  
OF HYDRATION



### SKIN WEAKENED BY DAILY AGGRESSORS



1.0 fl.oz. | SRP: \$40

#### CICALFATE+ INTENSIVE SKIN RESTORATIVE SERUM

##### Indications:

- Sensitive skin weakened by daily aggressors • Cutaneous sensitivity
- Compromised skin barrier

##### Benefits & Key Ingredients:

- Promotes lasting, healthy skin and provides protection from daily aggressors
- TRP-Regulin™:** Helps reduce skin sensitivity and soothes sensations of discomfort
- Pro-Vitamin B5:** Helps strengthen the skin barrier while replenishing moisture levels in the skin
- Avène Thermal Spring Water:** Soothes, softens and calms skin

HELPS RESTORE SKIN BARRIER  
**IN 1 DAY<sup>7</sup>**

LASTINGLY STRENGTHENS SKIN BARRIER<sup>8</sup>

### VERY DRY, CRACKED HANDS



3.3 fl.oz. | SRP: \$27

#### CICALFATE RESTORATIVE HAND CREAM

##### Indications:

- Very dry hands
- Discomfort caused by extreme climates and cleansing products

##### Benefits & Key Ingredients:

- Helps restore and protect the skin's barrier
- Rich, nourishing texture without greasy residue
- Absorbs quickly into skin
- Sucralfate:** Helps restore the skin
- Copper-Zinc Sulfate Complex:** Promotes healthy skin environment for optimal recovery
- Avène Thermal Spring Water:** Soothes, softens and calms skin

LASTS THROUGH **5 HAND WASHINGS<sup>9</sup>**

TESTED ON SENSITIVE SKIN • FRAGRANCE-FREE • PARABEN-FREE • NON-COMEDOGENIC • FORMULATED TO MINIMIZE RISKS OF ALLERGIC REACTIONS

<sup>5</sup>Open, mono-center clinical study conducted under dermatological and ophthalmological control. 62 subjects, 2 applications per day for 21 days. <sup>6</sup>Hydration index development comparison between Cicalfate LIPS, control area, and competitive product after a single application on 16 subjects. <sup>7</sup>Pharmacological test on RHE under hydric stress. <sup>8</sup>Clinical study, 35 subjects, sensitive skin assessment using a scale from 0 to 10 using the serum twice a day on face, neck and eye contour for 21 days. <sup>9</sup>Study on 11 subjects. Cicalfate HAND applied once at T1, lipid index measured at T1 and after each successive hand washing. p<0.0001.