

# GREAT HAIR DAYS START WITH A HEALTHY SCALP

Plant-based pre-shampoo treatments for  
stronger, healthier hair *in just one month*<sup>1</sup>



## HEAD SPA

# GREAT HAIR DAYS START WITH A HEALTHY SCALP

Cleanses 100% of impurities *in just one use*<sup>1</sup>

94%

felt that hair stayed  
cleaner for longer<sup>2</sup>



HEAD SPA  
Scrub

<sup>1</sup>Result at D+6 weeks, study conducted on 33 men and women. <sup>2</sup>Result after 1 application, study carried out on 33 men and women. \*Avoid use on irritated scalps.



# GREAT HAIR DAYS START WITH A HEALTHY SCALP

Rebalance the scalp for stronger,  
healthier hair *in just one month*<sup>1</sup>

85%

felt hair was stronger<sup>1</sup>

NATURALLY DERIVED  
100%  
— INGREDIENTS —

HEAD SPA  
Complexe 5

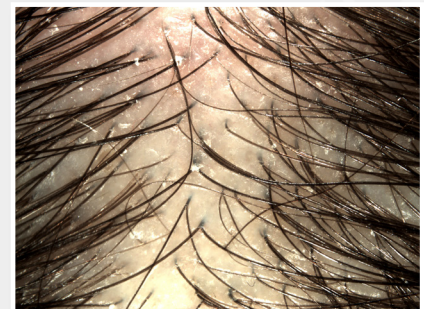
<sup>1</sup> Consumer use test of Complexe 5 conducted on 68 people, women and men, during 28 days.

# GREAT HAIR DAYS START WITH A HEALTHY SCALP

Soothe scalp discomfort ***after the 1<sup>st</sup> use***  
& protect against further sensitivity<sup>1</sup>



BEFORE



AFTER

Results may vary

## HEAD SPA

Astera



# VISIBLE RESULTS IN JUST ONE MONTH<sup>1</sup>

Plant-based solution, formulated for hormonal, hereditary *thinning hair*



**+7,490 HAIRS IN THE GROWTH PHASE**  
after 3rd month of treatment<sup>1</sup>



DAY 0



DAY 30

Results may vary

## TRIPHASIC

Progressive

<sup>1</sup> Results on the number of new hairs from the first course of treatment (3 months). Clinical study conducted under dermatological supervision on 60 men and women with progressive hair loss, from Stage I to III on the Ludwig Scale (women) and Stage II to IV (men) on the Norwood-Hamilton Scale. Evaluation by the leading method: the phototrichogram. Average value of hair for the alopecic area (40% of the surface of the scalp on average).