



RENE
FURTERER
PARIS

GREAT HAIR DAYS START WITH A HEALTHY SCALP

Plant-based pre-shampoo treatments for
stronger, healthier hair ***in just one month***¹



HEAD SPA

¹ Consumer use test of Compexe 5 conducted on 68
people, women and men, during 28 days.



RENE
FURTERER
PARIS

GREAT HAIR DAYS START WITH A **HEALTHY SCALP**

Plant-based pre-shampoo treatments for
stronger, healthier hair ***in just one month¹***



HEAD SPA

¹ Consumer use test of Complexe 5 conducted on 68 people, women and men, during 28 days.



RENE
FURTERER
PARIS

GREAT HAIR DAYS START WITH A HEALTHY SCALP

Rebalance the scalp for stronger,
healthier hair ***in just one month***¹



NATURALLY DERIVED
100%
INGREDIENTS

HEAD SPA
Complexé 5

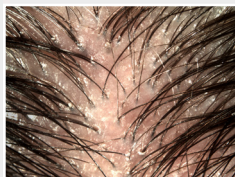
¹ Consumer use test of Complexé 5 conducted on 68 people, women and men, during 28 days.



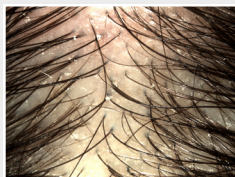
RENE
FURTERER
PARIS

GREAT HAIR DAYS START WITH A HEALTHY SCALP

Soothes scalp discomfort **after the 1st use**
& protects against further sensitivity¹



BEFORE



AFTER

Results may vary

HEAD SPA

Astera

¹ Consumer use test conducted on 68 people, women and men, during 28 days.



RENE
FURTERER
PARIS

GREAT HAIR DAYS START WITH A HEALTHY SCALP

Cleanses 100% of impurities *after just one use*¹



NATURALLY DERIVED
99%
— INGREDIENTS —

BIODEGRADABLE
FORMULA

HEAD SPA

Scrub

Result at D+6 weeks, study conducted
on 33 men and women.

P0008035 | X03086



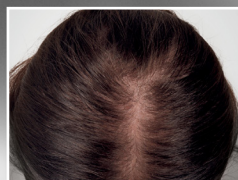
RENE
FURTERER
PARIS

VISIBLE RESULTS IN JUST ONE MONTH¹

Plant-based solution, formulated for
hormonal, hereditary **thinning hair**



DAY 0



DAY 30

Results may vary

TRIPHASIC Progressive

¹ Results on the number of new hairs from the first course of treatment (3 months). Clinical study conducted under dermatological supervision on 60 men and women with progressive hair loss, from Stage I to III on the Ludwig Scale (women) and Stage II to IV (men) on the Norwood-Hamilton Scale. Evaluation by the leading method: the phototrichogram. Average value of hair for the alopecic area (40% of the surface of the scalp on average).